

Albany Basement Avail Now, Suitable for Office Building

971-208-3778

220 6th Av Sw
Albany, Oregon 97321

Rent: \$2,325.51 Size: 2349 SqFt

Office

Listing Type: Lease

Lease Type: NNN

Deposit: \$2,500.00 USD
On approved credit

Application Fee: \$68.00 USD

Included Utilities:

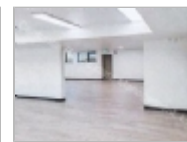
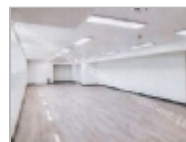
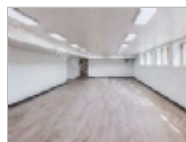
Water / Sewage / Garbage

Heat Type:

gas

For more information:

<http://c-rem.com/>



Property Description

Address: 220 6th Av SW, Albany, OR 97321

Property Type: Office

Rent: \$0.99/SF or \$2325.51/month

Deposit: \$2,500 (On Approved Credit)

Application Fee: \$68/ per adult 18+

Listing Type: Lease

Tenancy: 3 Year Lease

Lease Type: NNN

Sq. Ft/M²: 2,349 Sq.Ft

Owner Paid Utilities: Water/Sewer/Garbage/Exterior Bldg Maintenance

Tenant Paid Utilities: Tenants are responsible for Electric/Gas/ Interior Bldg Maintenance, Insurance, Base Year Taxes, Janitorial.

Building Amenities: Elevator Partial Fenced Yard Central Fire System Handicap Amenities Signage Security System

Ready Date: 10/27/2020

Viewing Status: Contact Raechel Alvarez (971) 208-3778 and raechel@c-rem.com to set up a time to visit!

Heat Type: Gas

Parking: 21 shared off-street parking spaces/ plus street parking.

DESCRIPTION: Basement lease opportunity of 2,349 SqFt, Upscale architecture featuring brick and glass built-in 1998. Located on the corner of 6th and Ellsworth for high traffic counts, great visibility, access to downtown, and Linn County Court House. All-new LED lighting plus natural lightning windows throughout for light and bright feel. Elevator services for ADA access. 21 shared off-street parking spaces plus street parking. Tenant improvements and concessions negotiable.

INTERESTED IN THIS PROPERTY?????

- Properties are either on a key check out from the main office or on a self-showing lockbox and each listing specifies how it is viewed.
- Feel free to drive by the property to check it out.
- Check out more photos on our website at www.c-rem.com
- Apply directly to the unit on our website www.c-rem.com under the "available rentals" tab. You can also stop by the office to pick up a paper copy.
- Call or Email Jacob at 503-468-5597, jacob@c-rem.com or Melissa at 503-825-0534, melissa@c-rem.com to schedule a viewing

This information is deemed reliable, but not guaranteed.

Centurion Real Estate Management, LLC

Office Location

Raechel Alvarez
971-208-3778



EQUAL HOUSING
OPPORTUNITY

Centurion Real Estate Management, LLC
1365 Commercial St. SE Salem OR 97302
Tel: (503) 881.7829 Fax: (503)371-0368 Web: www.c-rem.com

Lease Details

3 Year Lease

Date Available: Immediately